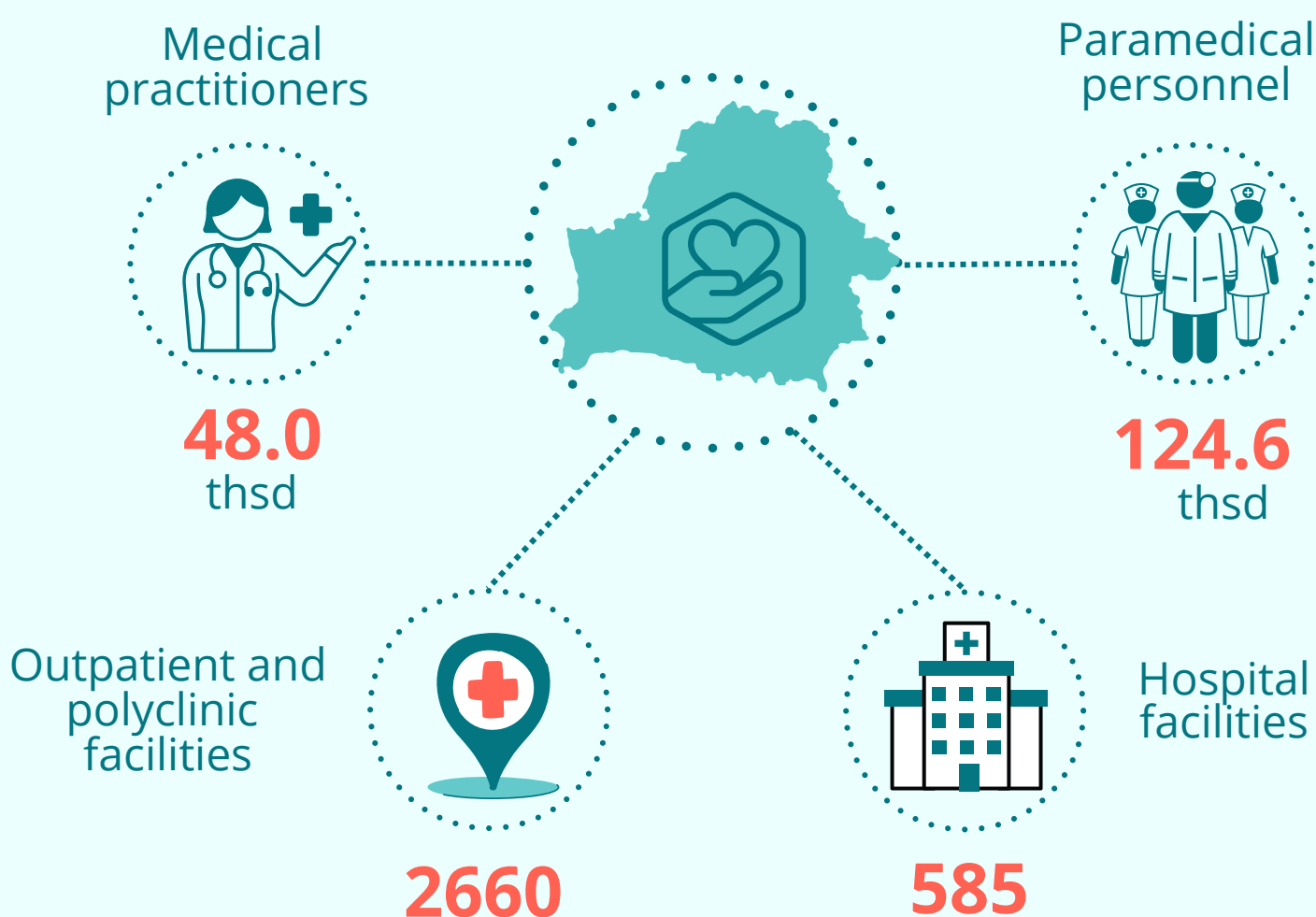
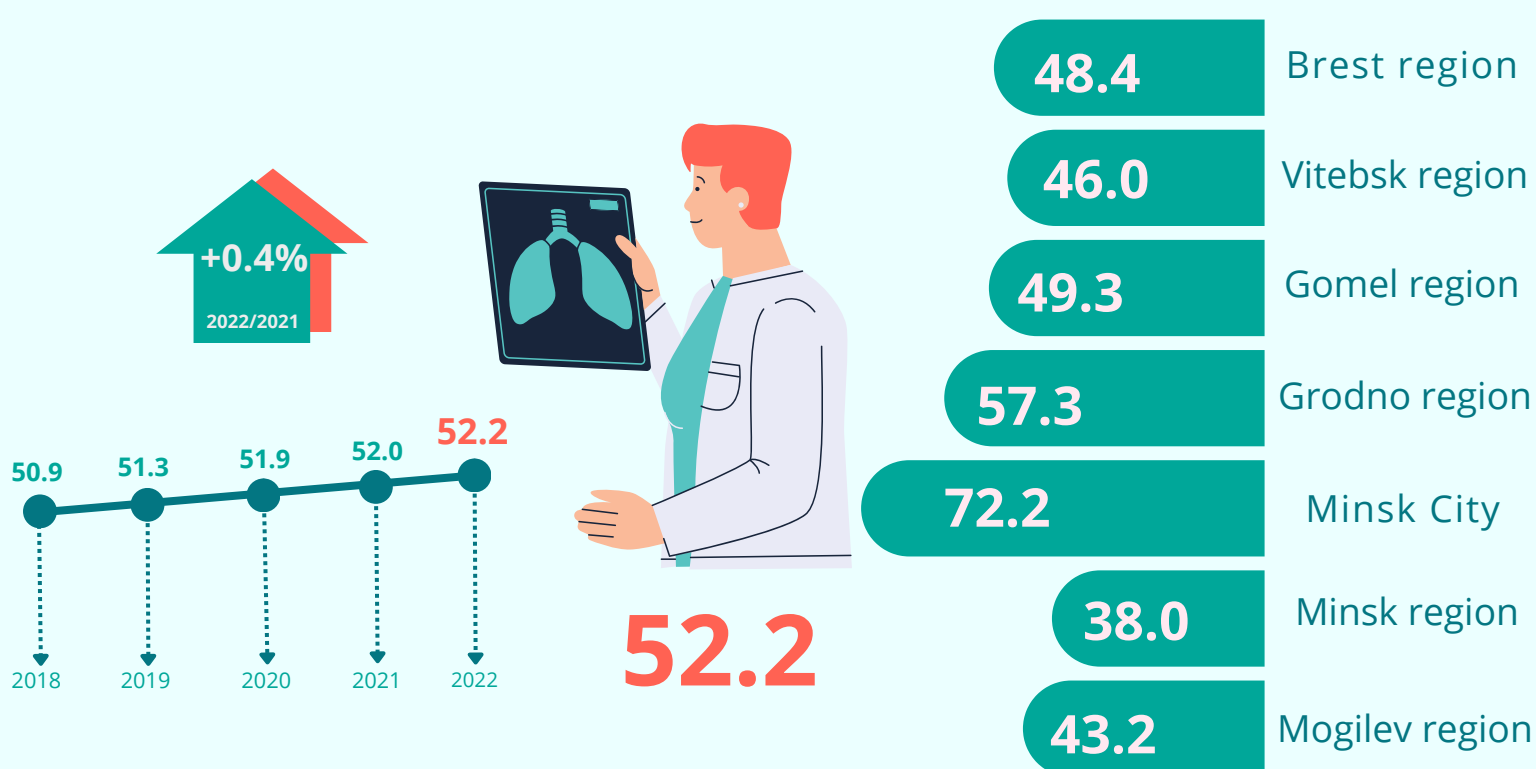


# Main indicators of public health in the Republic of Belarus

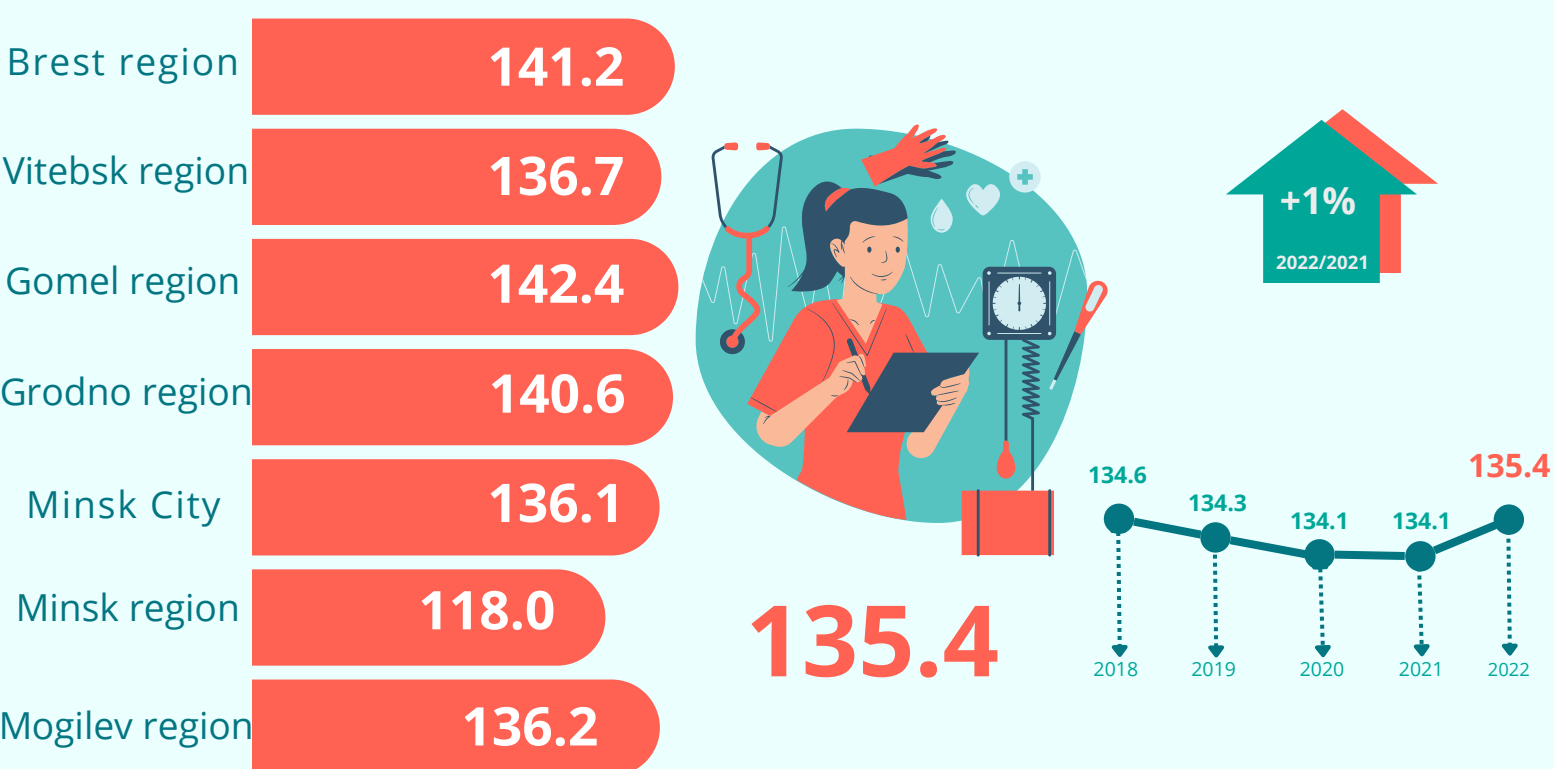
in 2022



## Medical practitioners per 10 000 population



## Paramedical personnel per 10 000 population



When using the information, the reference to the National Statistical Committee of the Republic of Belarus is mandatory

© National Statistical Committee of the Republic of Belarus

Tel: +375 17 343 84 19

E-mail: demzdrav@belstat.gov.by

Address:  
12 Partizansky avenue,  
220070 Minsk, Belarus