

# Internet subscribers\*

(end of 2022)

**Internet subscribers**  
(thousand)

**13 636.2**



**fixed broadband  
access**

**3 125.1**

**wireless broadband  
access**

**9 321.8**

**193.2**

**legal entities and  
individual entrepreneurs**

**1 086.9**

**2 931.9**

**individuals**

**8 234.9**

**Volume of data consumed by  
subscribers and users connected  
to the Internet**

(Pbyte)

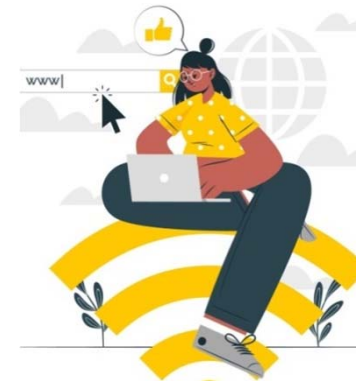
**6 082**

**on fixed broadband  
access**

**4 694**

**on wireless broadband  
access**

**1 388**



## Internet subscribers

**148**

per 100 population

fixed broadband  
access

**34**

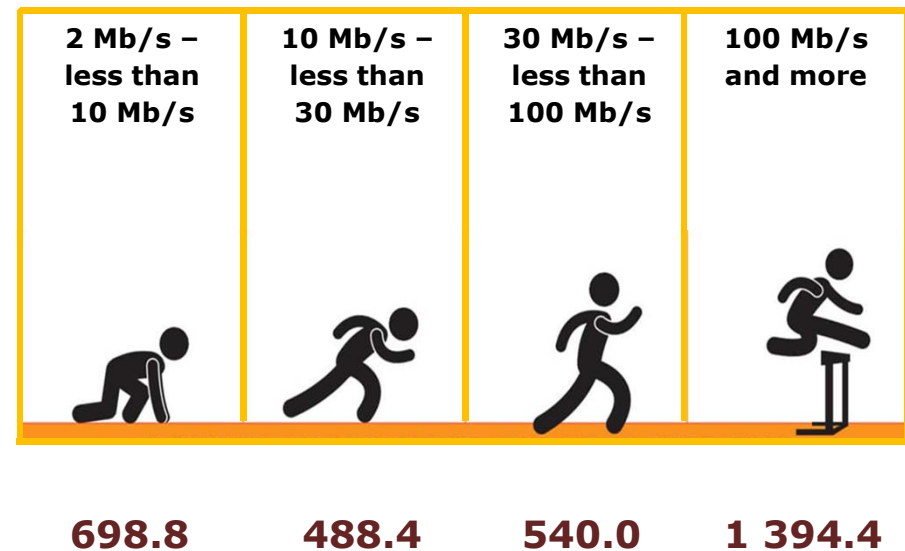
wireless broadband  
access

**101**



## Fixed broadband Internet subscribers by speed

(thousand)

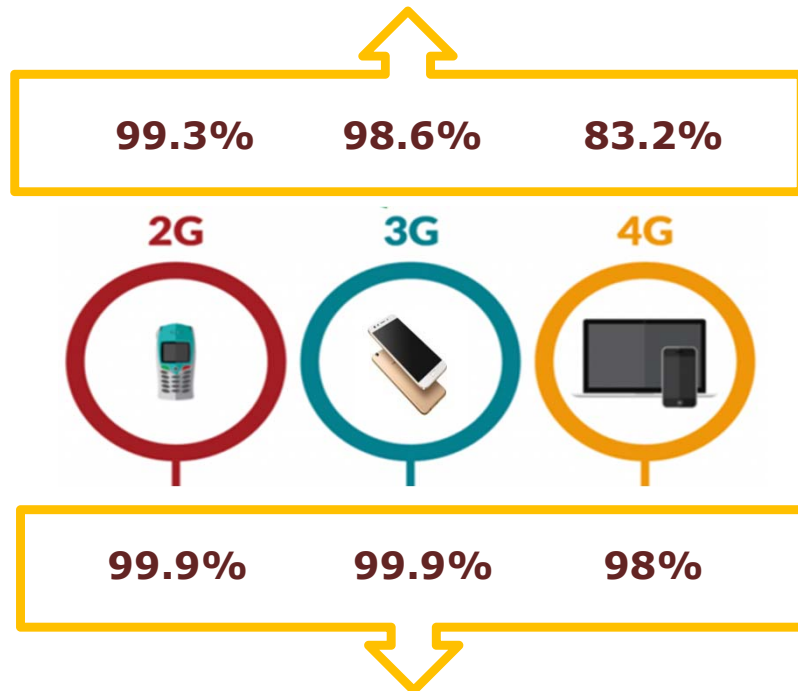


*\* Data are given on unique subscribers. A unique subscriber is a subscriber with whom the telecommunication operator has concluded a contract for the provision of telecommunication services and/or whom a unique identifier (login) has been allocated to access telecommunication network services.*

# Mobile cellular telecommunication

(end of 2022)

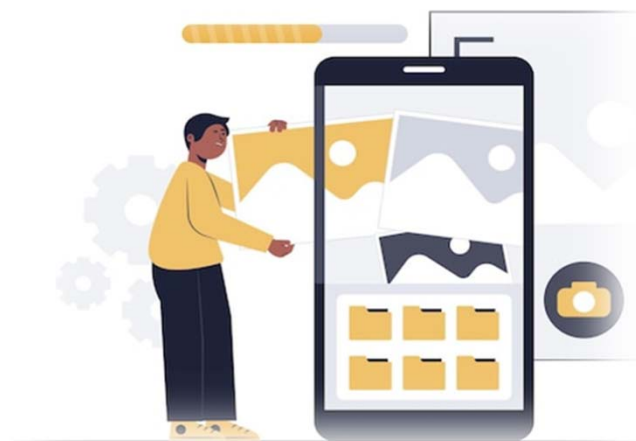
## Territory of the Republic of Belarus covered by mobile cellular telecommunication network



## Population of the Republic of Belarus covered by mobile cellular telecommunication services

## Mobile cellular telecommunication subscriptions

**11 770.6**  
thousand



**128**  
per 100 population

*When using the information the reference to the National Statistical Committee of the Republic of Belarus is mandatory.*

© National Statistical Committee of the Republic of Belarus  
Tel: +375 17 379 17 96  
E-mail: tsi@belstat.gov.by

Address:  
12 Partizansky avenue,  
220070 Minsk, Belarus