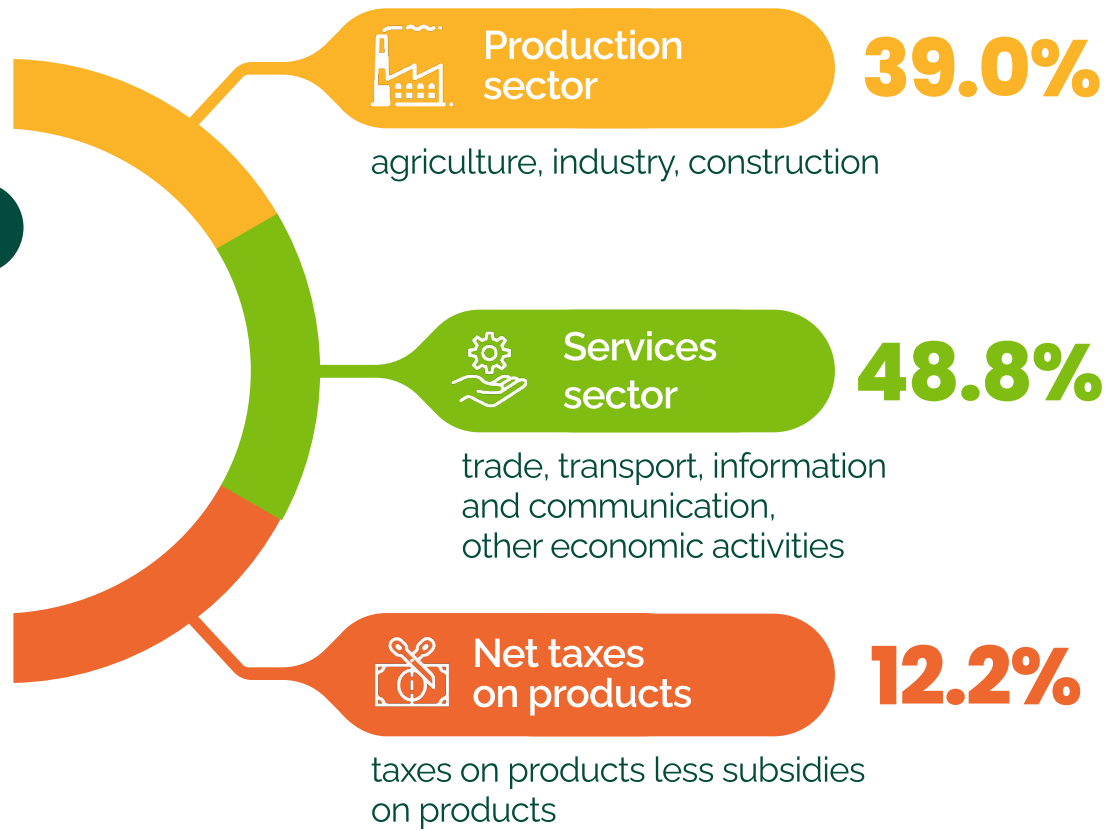


Gross domestic product by production approach for 2023

GDP

BYN **218** billion
104.1% by 2022

GDP per capita
BYN **23 748.3**



Gross value added by economic activities

(at current prices; BYN million / % of GDP)

Agriculture, forestry
and fishing

BYN 15 799.7 million / 7.3%



Transportation, storage,
postal and courier activities

BYN 11 265.8 million / 5.2%



Industry

BYN 57 740.0 million / 26.5%



Information
and communication

BYN 11 033.8 million / 5.0%



Construction

BYN 11 345.4 million / 5.2%



Other economic activities

BYN 62 752.1 million / 28.8%



Wholesale and retail trade;
repair of motor vehicles
and motorcycles

BYN 21 329.3 million / 9.8%



Net taxes on products

BYN 26 702.9 million / 12.2%



Gross regional product for 2023

Brest region

- Gross regional product, at current prices

BYN 24.8 billion

- Gross regional product per capita

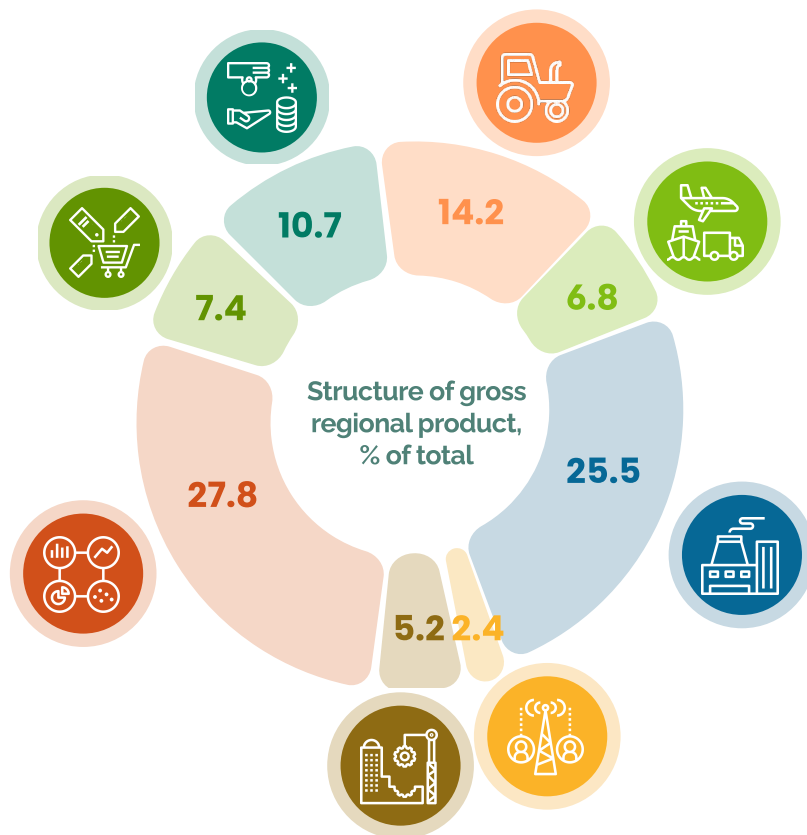
BYN 18 898.3

- Volume index of GRP, % of 2022

103.4%

- Share of GRP in GDP

11.4%



Vitebsk region

- Gross regional product, at current prices

BYN 19.5 billion

- Gross regional product per capita

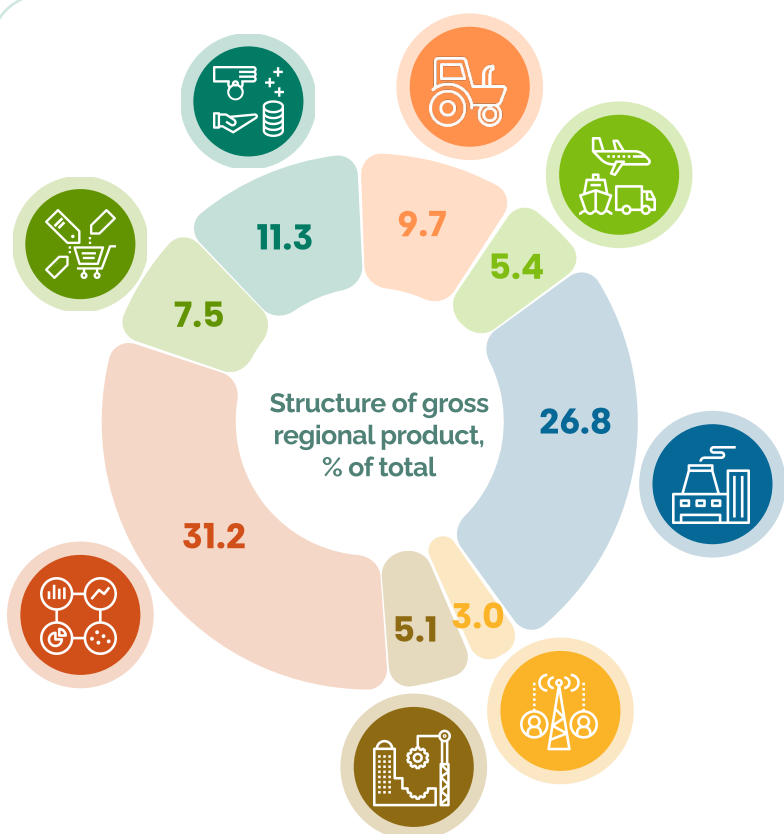
BYN 17 952.4

- Volume index of GRP, % of 2022

103.2%

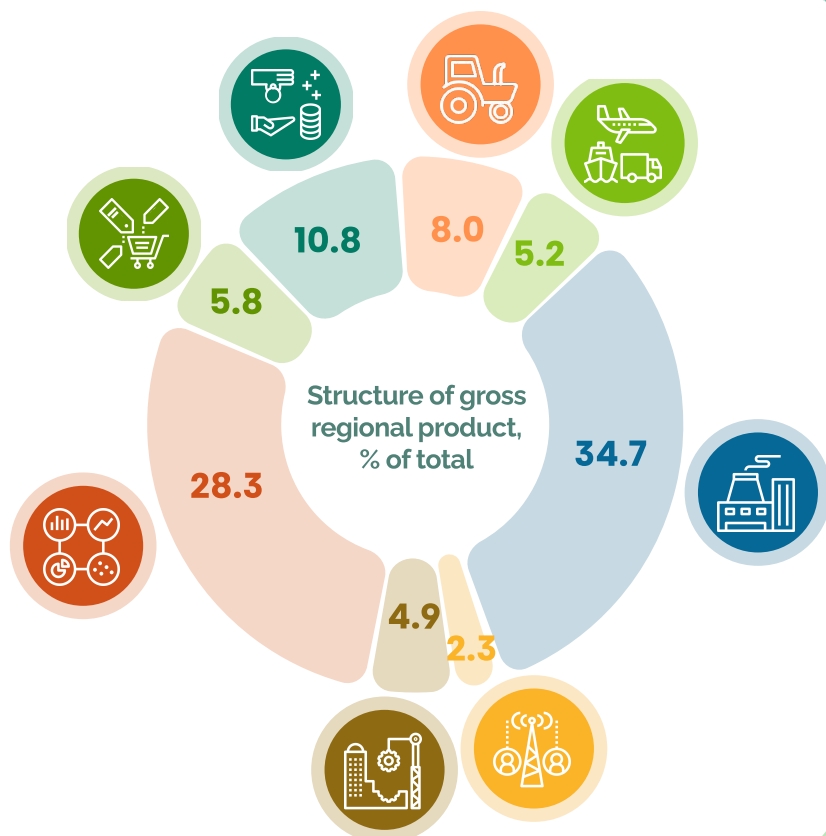
- Share of GRP in GDP

8.9%



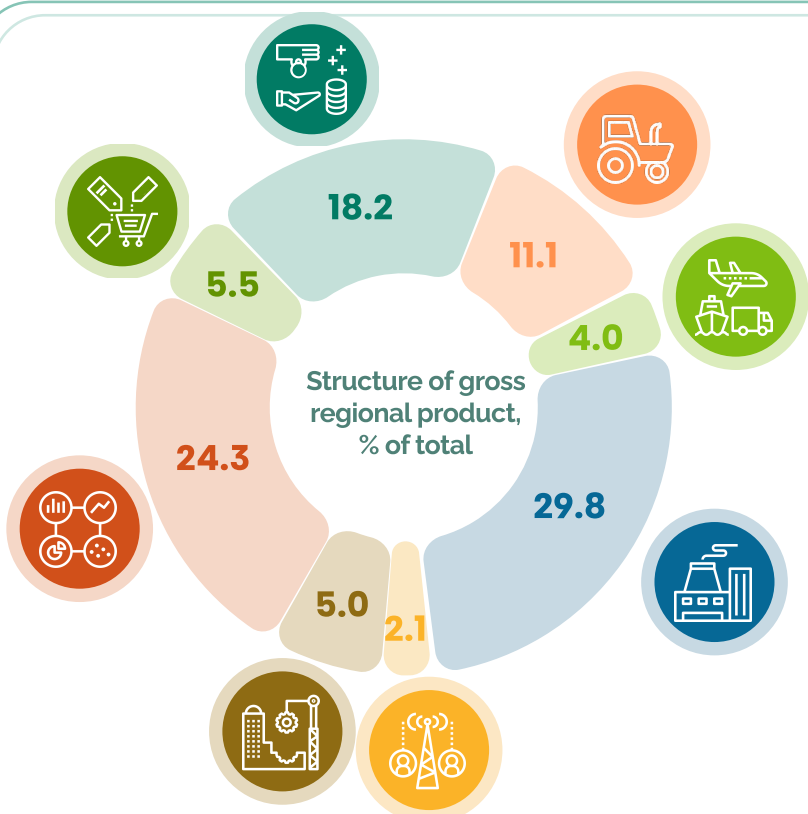
Gomel region

- Gross regional product, at current prices
BYN 24.8 billion
- Gross regional product per capita
BYN 18 438.8
- Volume index of GRP, % of 2022
102.9%
- Share of GRP in GDP
11.4%



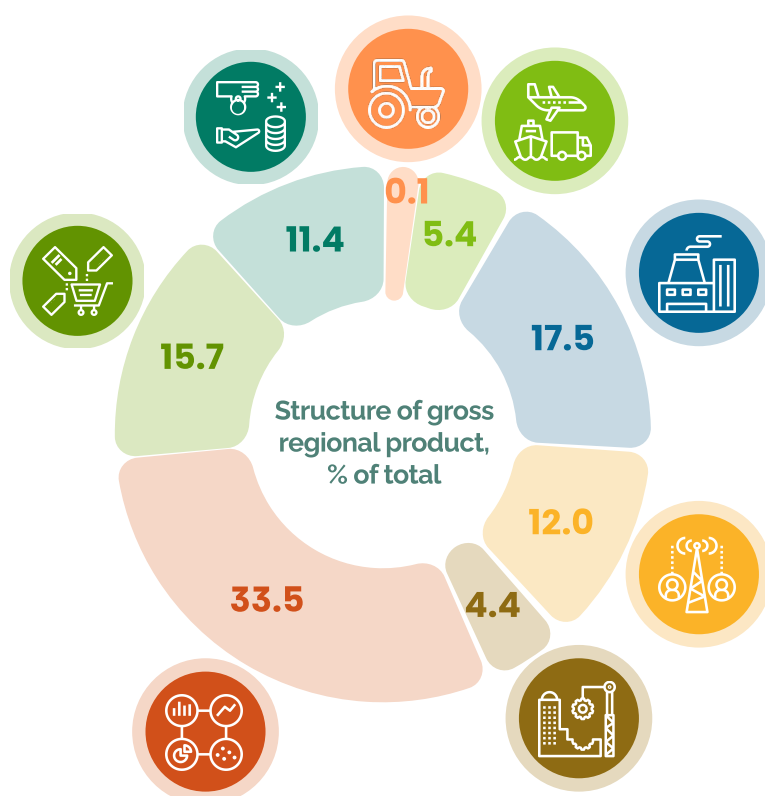
Grodno region

- Gross regional product, at current prices
BYN 23.5 billion
- Gross regional product per capita
BYN 23 648.6
- Volume index of GRP, % of 2022
106.6%
- Share of GRP in GDP
10.8%

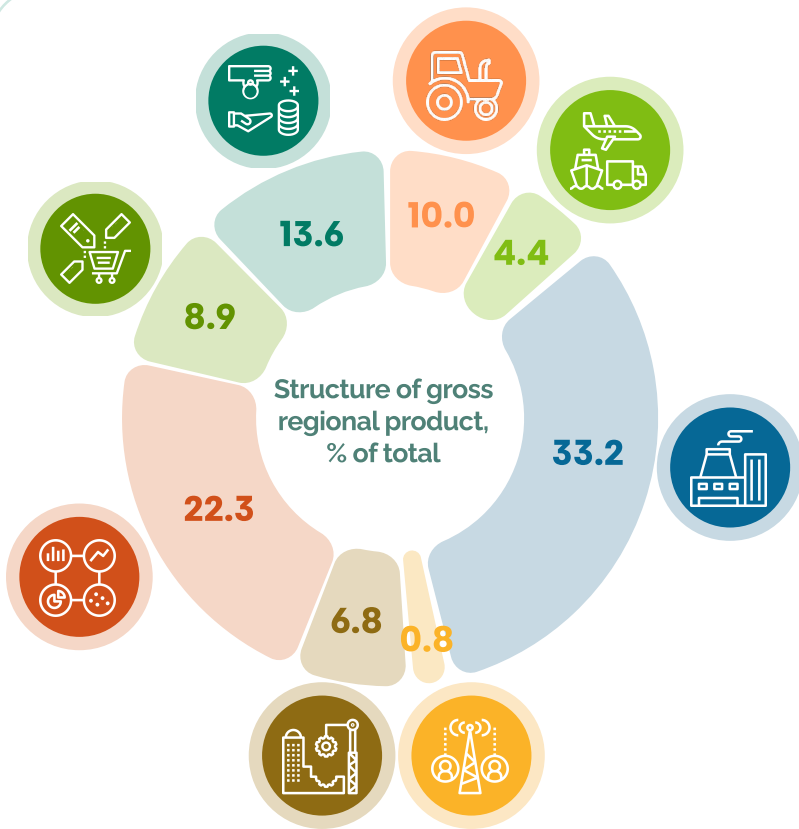


Minsk city

- Gross regional product, at current prices
BYN 67.1 billion
- Gross regional product per capita
BYN 33 654.0
- Volume index of GRP, % of 2022
101.3%
- Share of GRP in GDP
30.8%



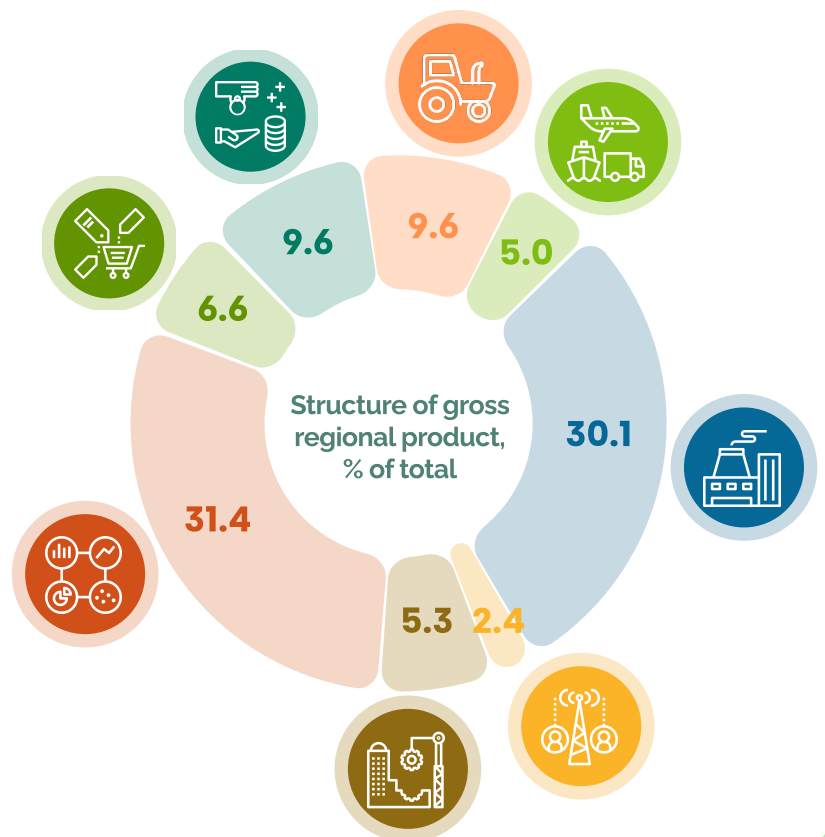
Minsk region



- Gross regional product, at current prices
BYN 41.6 billion
- Gross regional product per capita
BYN 28 441.8
- Volume index of GRP, % of 2022
109.8%
- Share of GRP in GDP
19.1%

Mogilev region

- Gross regional product, at current prices
BYN 16.7 billion
- Gross regional product per capita
BYN 16 930.5
- Volume index of GRP, % of 2022
101.6%
- Share of GRP in GDP
7.6%



When using the information the reference to the National Statistical Committee of the Republic of Belarus is mandatory. Illustrations: www.icons8.com, www.freepik.com.