

EMPLOYED PERSONS BY STATUS OF EMPLOYMENT IN 2023

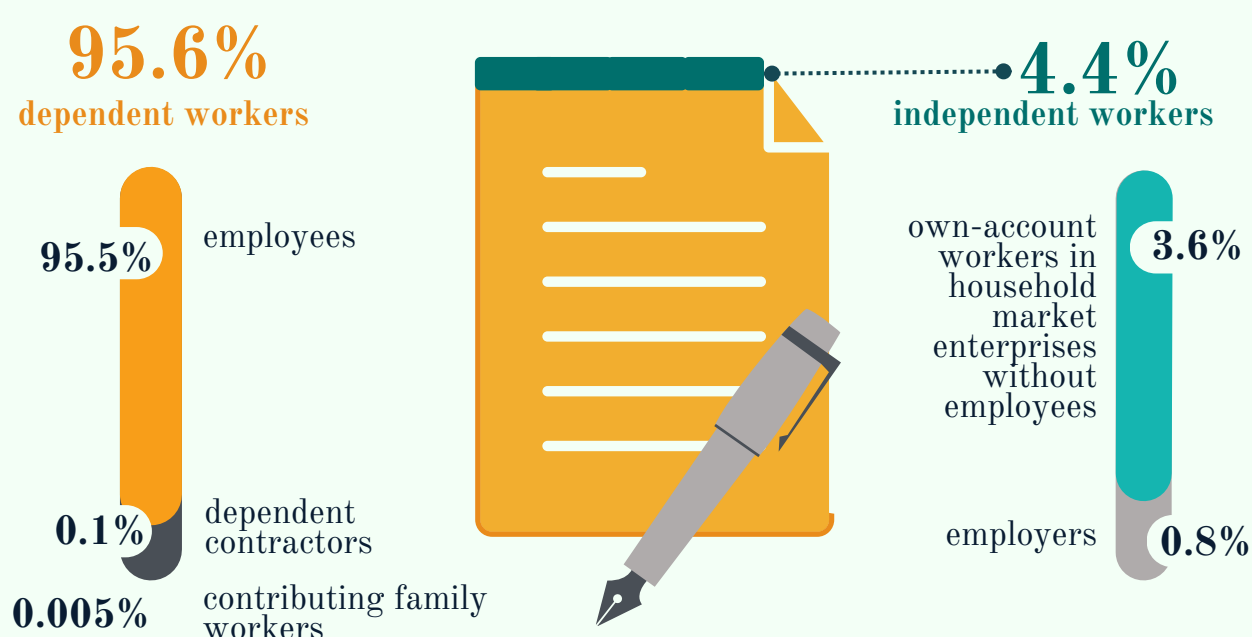


!FOR THE FIRST TIME!

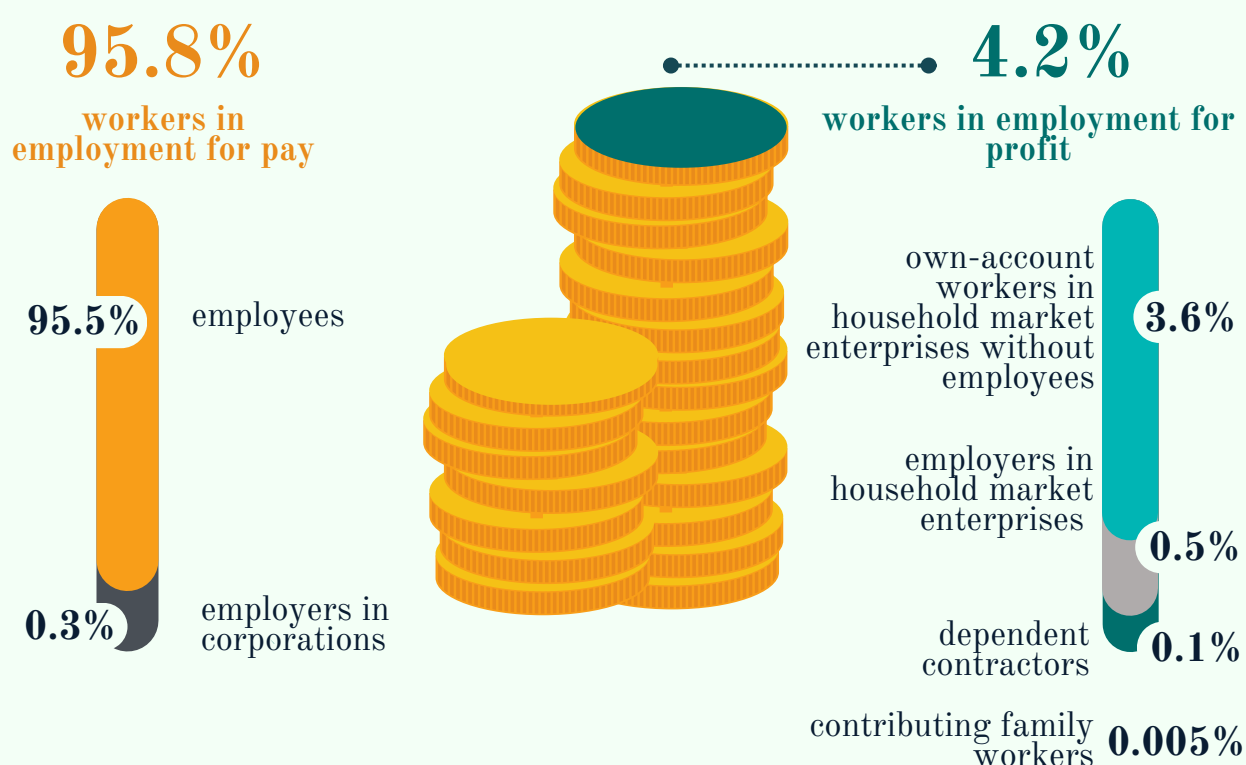


NEW CLASSIFICATION OF STATUS IN EMPLOYMENT (ICSE-18)

1 According to type of authority (ICSE-18-A)



2 According to type of economic risk (ICSE-18-R)



WHO IS WHO?



ICSE-18 – International Classification of Status in Employment

ICSE-18-A

Type of authority: describes the degree of control a worker has over the organization he/she works for, over his/her business and whether he/she can organise his/her work independently

ICSE-18-R

Type of economic risk: defined according to the level of worker's exposure to loss of financial or other personal resources in carrying out his/her activities and the degree of risk of not receiving remuneration for the work done

Employers employ workers on a permanent basis.

Own-account workers do not employ any persons engage any employees.

Employees work under an employment agreement (contract) regardless of its term.

Dependent contractors are self-employed persons who are not employees of the economic unit but have commercial contractual relations with it. They do not have a total control over the activities of the economic unit but depend on it as regards organisation and execution of the work, income, or access to the market.

Contributing family workers are individuals who work as helpers for an organisation owned by a relative.