



BUSINESS IN FIGURES*

2025

Republic of Belarus



were active

136.6 thsd
legal entities

104.7 %
over 2024



worked

2 506.9
thsd persons

101.3 %
over 2024



received revenue from sales of products,
goods, works and services

692.7
BYN bn

107.3 %
over 2024

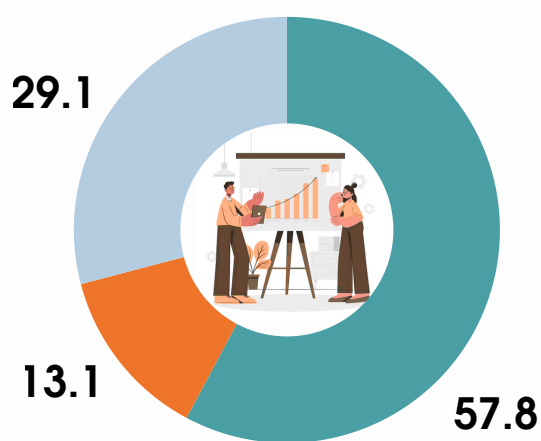
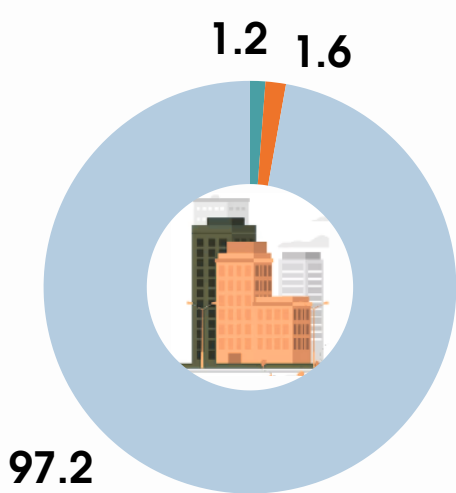
SHARE OF LARGE, MEDIUM AND SMALL ORGANISATIONS IN MAIN ECONOMIC INDICATORS OF THE COUNTRY'S BUSINESS COMMUNITY

Republic of Belarus

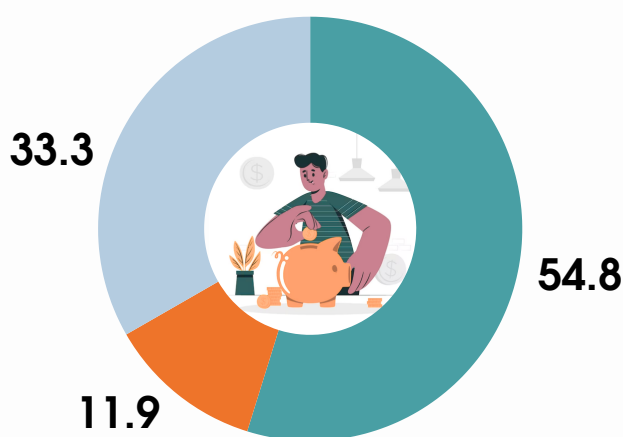
(percent of total)

Number
of legal entities

Payroll number of employees
on average for the year



Revenue from sales of products, goods,
works and services



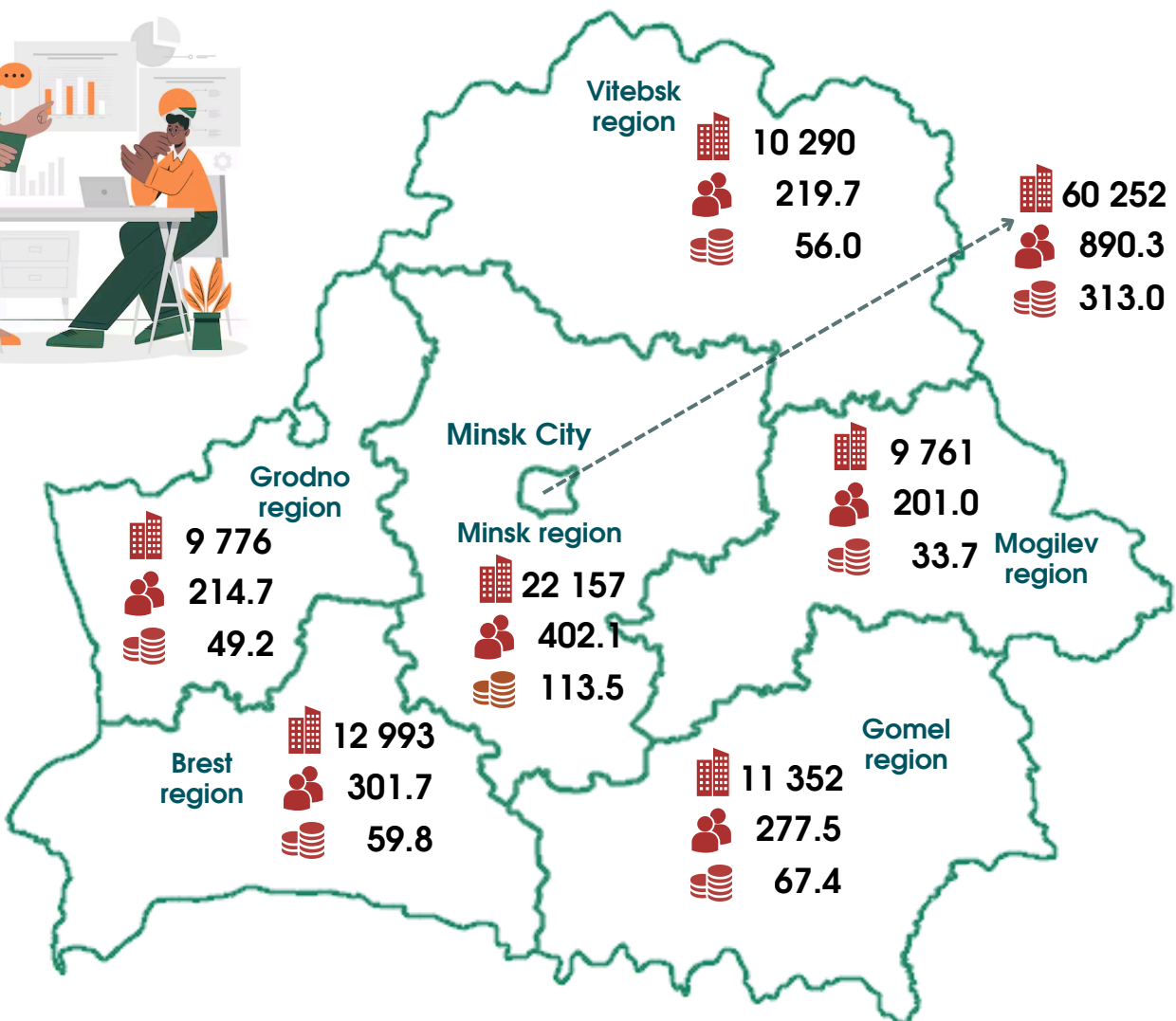
- Large organisations
- Medium organisations
- Small organisations

*The data are provided by commercial organisations

MAIN ECONOMIC INDICATORS BY REGIONS OF THE COUNTRY

By regions and Minsk City

(statistical indicators are given based on the location of the legal entity)



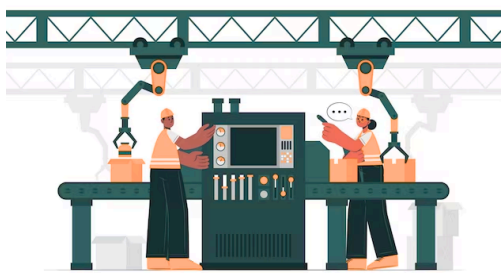
KEY BUSINESS SECTORS OF THE REPUBLIC

By kinds of economic activity

(statistical indicators are given based on the main type of economic activity of a legal entity)

Industry

(sections B, C, D and E OKED**)



Number of legal entities

17 625 entities
12.9 % of total
101.4 % over 2024

Payroll number of employees

931.0 thsd persons
37.1 % of total
99.4 % over 2024

Revenue from sales

248.5 BYN bn
35.9 % of total
101.1 % over 2024

Construction

(section F OKED)



Number of legal entities

9 933 entities
7.3 % of total
106.6 % over 2024

Payroll number of employees

220.5 thsd persons
8.8 % of total
104.9 % over 2024

Revenue from sales

36.9 BYN bn
5.3 % of total
124.8 % over 2024

Wholesale and retail trade; repair of motor vehicles and motorcycles

(section G OKED)



Number of legal entities

46 868 entities
34.3 % of total
102.9 % over 2024

Payroll number of employees

436.2 thsd persons
17.4 % of total
103.5 % over 2024

Revenue from sales

253.1 BYN bn
36.5 % of total
104.6 % over 2024



Number of legal entities



Payroll number of employees on average for the year, thsd persons



Revenue from sales of products, goods, works and services, BYN bn

YOU SHOULD BE FAMILIAR WITH THE METADATA



Categories of commercial organisations

defined in accordance with amendments of April 22, 2024 to the Law of the Republic of Belarus of July 1, 2010 "On the support to small and medium-sized business".

Number of legal entities

is given for commercial organisations (that carried out the activity, new ones that have not yet started operating, and organisations temporarily economically inactive), which were active at the end of the year the main type of economic activity of which was classified in sections A-S of OKED (except for section O, section 94 of section S).

Payroll number of employees -

the number of employees who worked under a labour contract and performed permanent, temporary or seasonal work for one day or more (including individual entrepreneurs and other Individuals engaged in individual entrepreneurial activities and under labour contracts in organisations).

In payroll number of employees includes both employees who actually came to work, including employees who did not work due to downtime, and those who were temporarily absent from work for any reason (those on labor leave, leave provided at the initiative of the employer, who did not show up for work, whose absences are issued by sick leave certificates or certificates of temporary disability, and for other reasons).

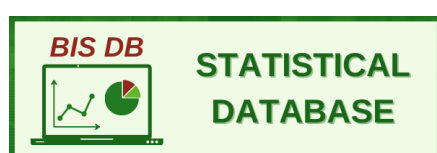
In payroll number of employees does not include external part-time workers, citizens who performed work under civil-law contracts, employees who are on maternity leave, to care for a child until they reach the age of three.

Revenue from sales of products, goods, works and services -

cash or assets in monetary terms received or to be received as a result of the sale of products, goods, works, services, if they are recognized as revenue in accordance with the law, for the main income-generating activity.



Additional information is posted:



Provided for information purposes.
When using the information the reference to the
National Statistical Committee of the Republic of Belarus is mandatory.

Tel: +375 (17) 350 41 74
E-mail: sbs4@belstat.gov.by

Address:
12, Partizansky avenue, 220070,
Minsk, Belarus