



# BUSINESS DEMOGRAPHY IN THE REPUBLIC OF BELARUS

2024

**Business demography** is a statistical domain that studies demographic events occurring to legal entities that are for-profit organisations

## ENTERPRISE ACTIVITY

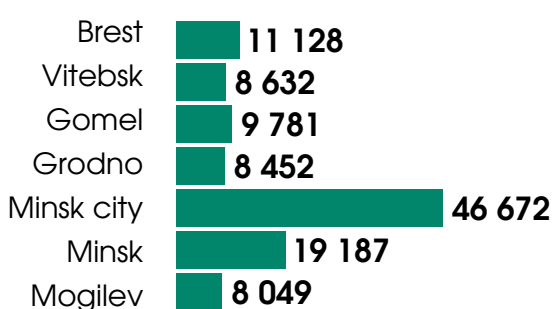
### Number of active enterprises

Republic of Belarus

**111 901**

↑ +4.6% to 2023

### By regions and Minsk city



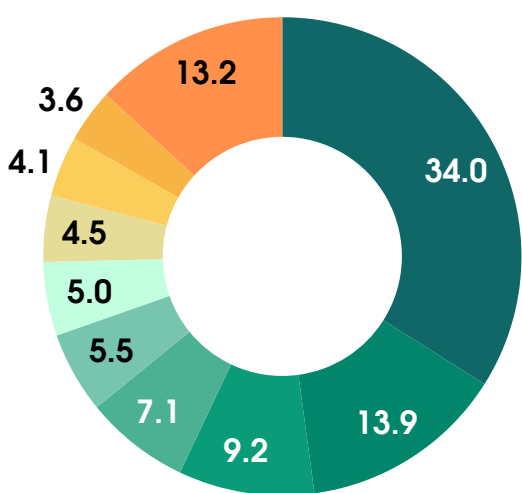
### Share of active enterprises by age

(percent of the total number of active enterprises)



### Share of active enterprises by economic activity

(percent of the total number of active enterprises)



- Wholesale and retail trade; repair of motor vehicles and motorcycles
- Industry
- Transportation, storage, postal and courier activities
- Construction
- Professional, scientific and technical activities
- Real estate activities
- Agriculture, forestry and fishing
- Accommodation and food service activities
- Information and communication
- Other economic activities

## ENTERPRISE BIRTHS

### Number of enterprise births

Republic of Belarus

**13 606**

↑ +28.6% to 2023

### Enterprise birth rate

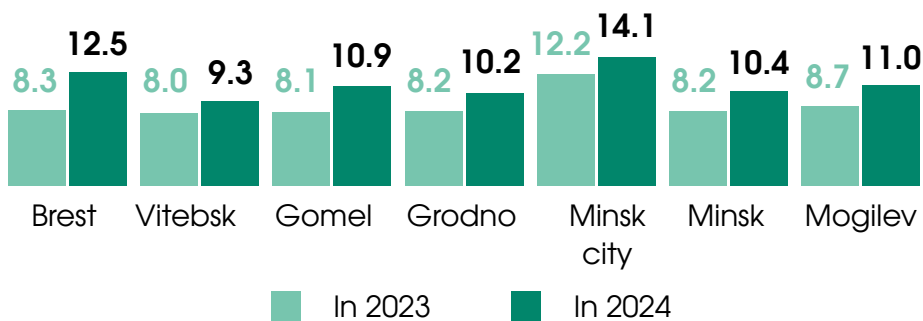
Republic of Belarus

**12.2%**

↑ +2.3 pp to 2023

### By regions and Minsk city

(percent)



### TOP 5 economic activities by enterprise birth rate

Education

Arts, sports, entertainment and recreation

Accommodation and food service activities

Transportation, storage, postal and courier activities

Other service activities



21.1%



20.1%



15.6%



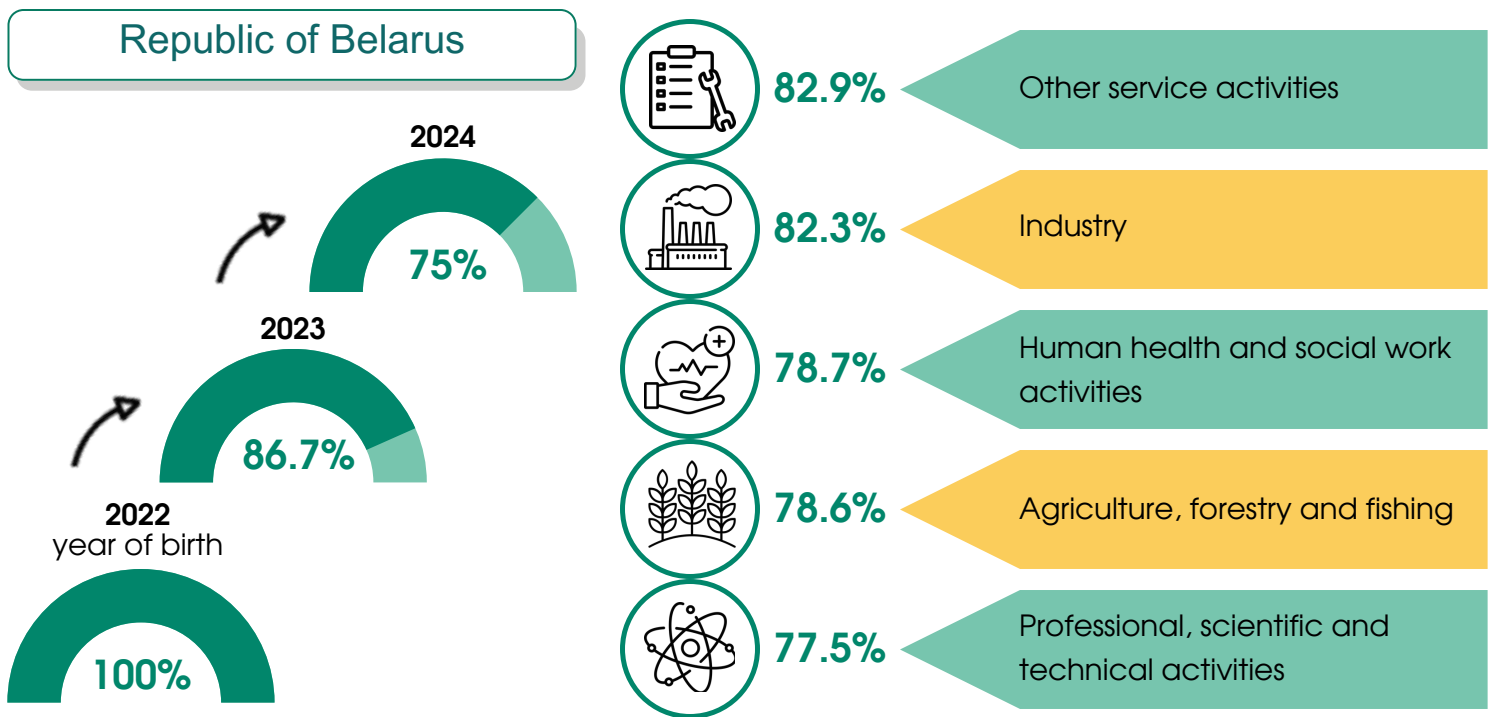
15.1%



14.9%

# ENTERPRISE SURVIVAL

TOP 5 economic activities  
by survival rate of newly born enterprises within two years



# ENTERPRISE DEATHS in 2022

Number of enterprise deaths

Republic of Belarus

**6 985**

↓ -11.8% to 2021

Enterprise death rate

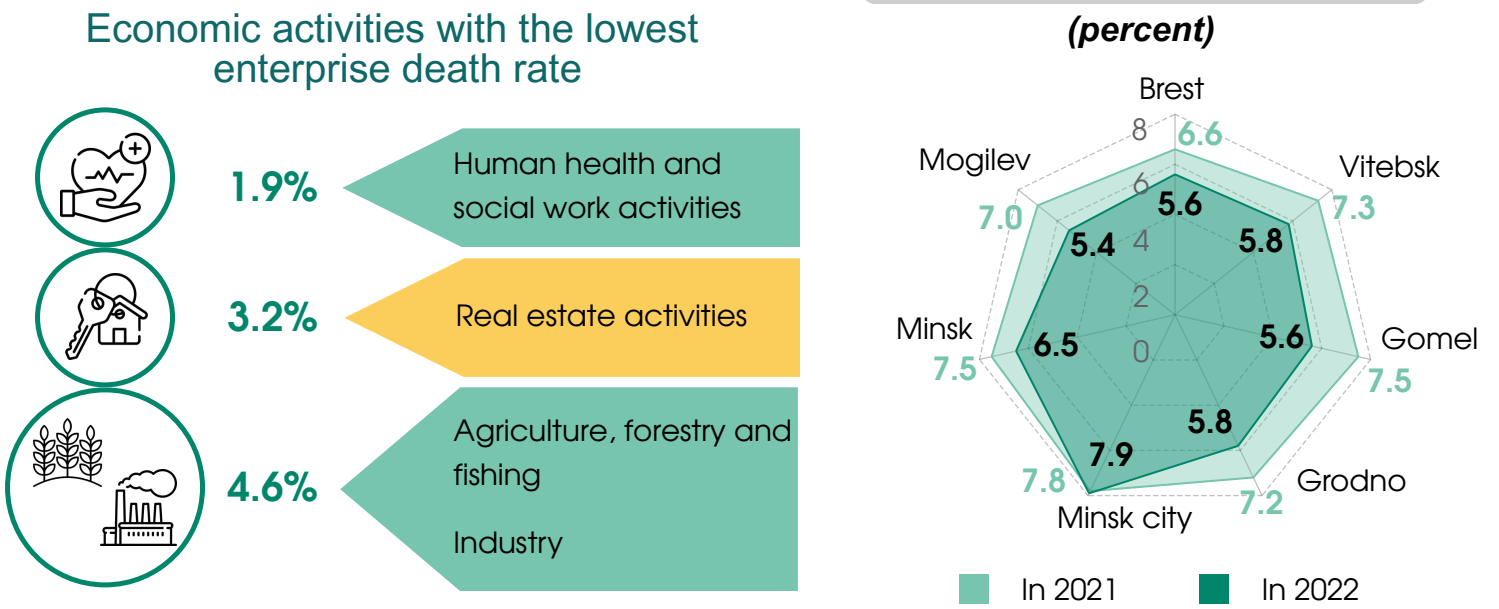
Republic of Belarus

**6.7%**

↓ -0.8 pp to 2021

By regions and Minsk city

(percent)



# ENTERPRISE GROWTH



Number of high-growth enterprises

**831**

↑ +16.4% to 2023

Republic of Belarus

Number of gazelles

**163**

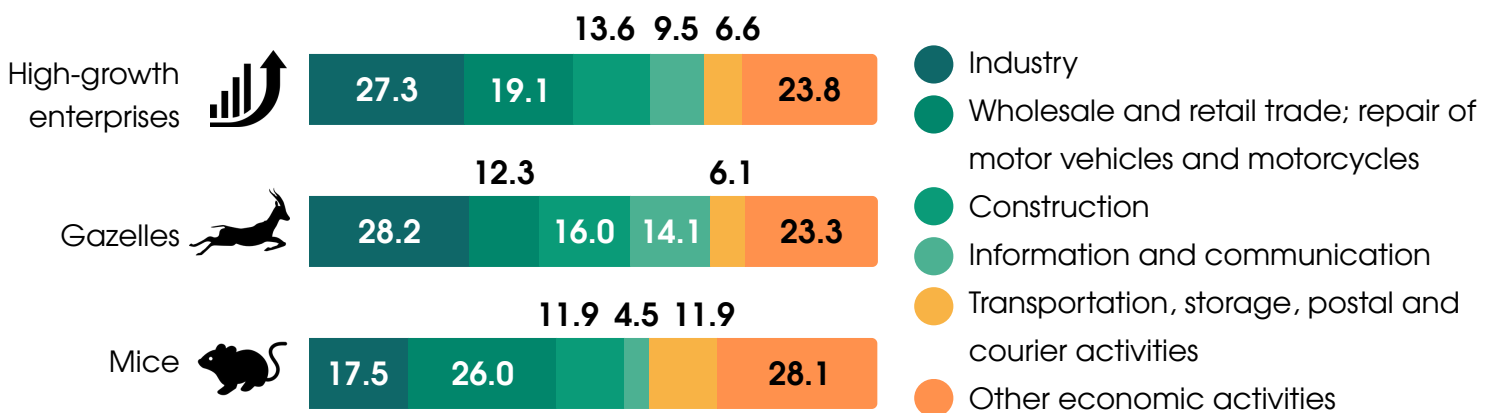
↓ -11.9% to 2023

Number of mice

**947**

↑ +6% to 2023

Share of enterprises by economic activity  
(percent of the total number of high-growth enterprises, gazelles and mice respectively)



Current information is located:



Presented for information purposes.  
When using the information, the reference to the  
National Statistical Committee of the Republic of Belarus is mandatory.