



Share in GDP*



25.0%
-0.3 P.P.
over 2024

Share in Total Employment



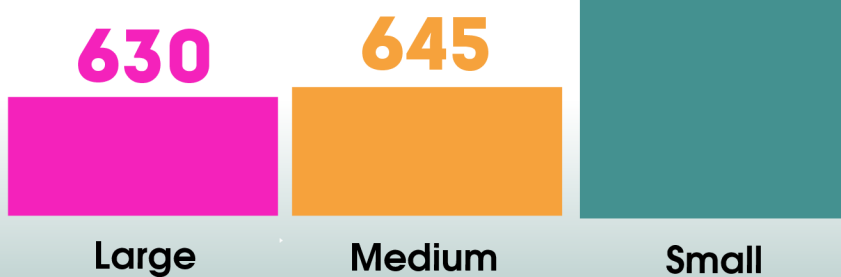
24.1%
-0.1 P.P.
over 2024

*Preliminary data

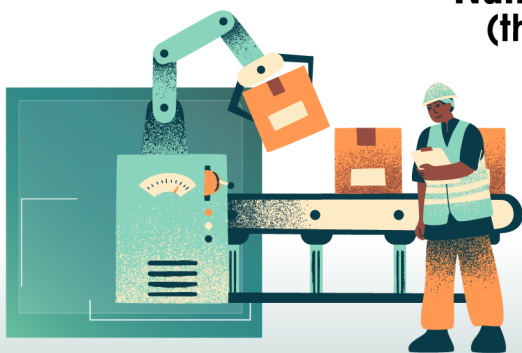
Number of Organisations

17 626

16 351



Number of Employees**
(thousand persons)



902.0

+2.4 thousand persons
over 2024

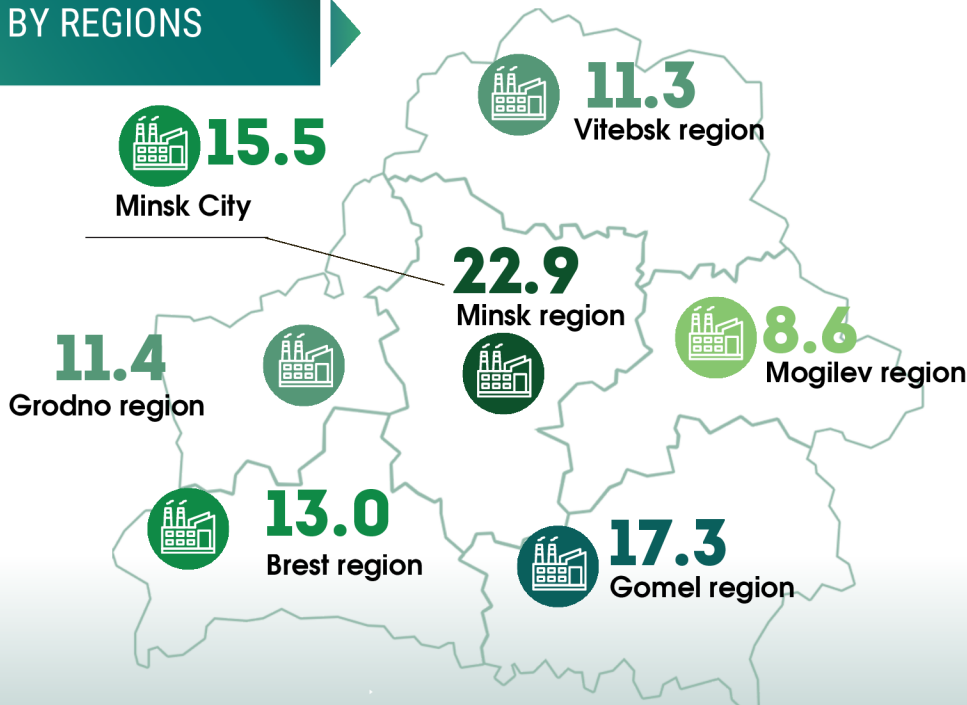
**Average annual staff headcount

Industrial Production Volume
(at current prices, BYN billion)

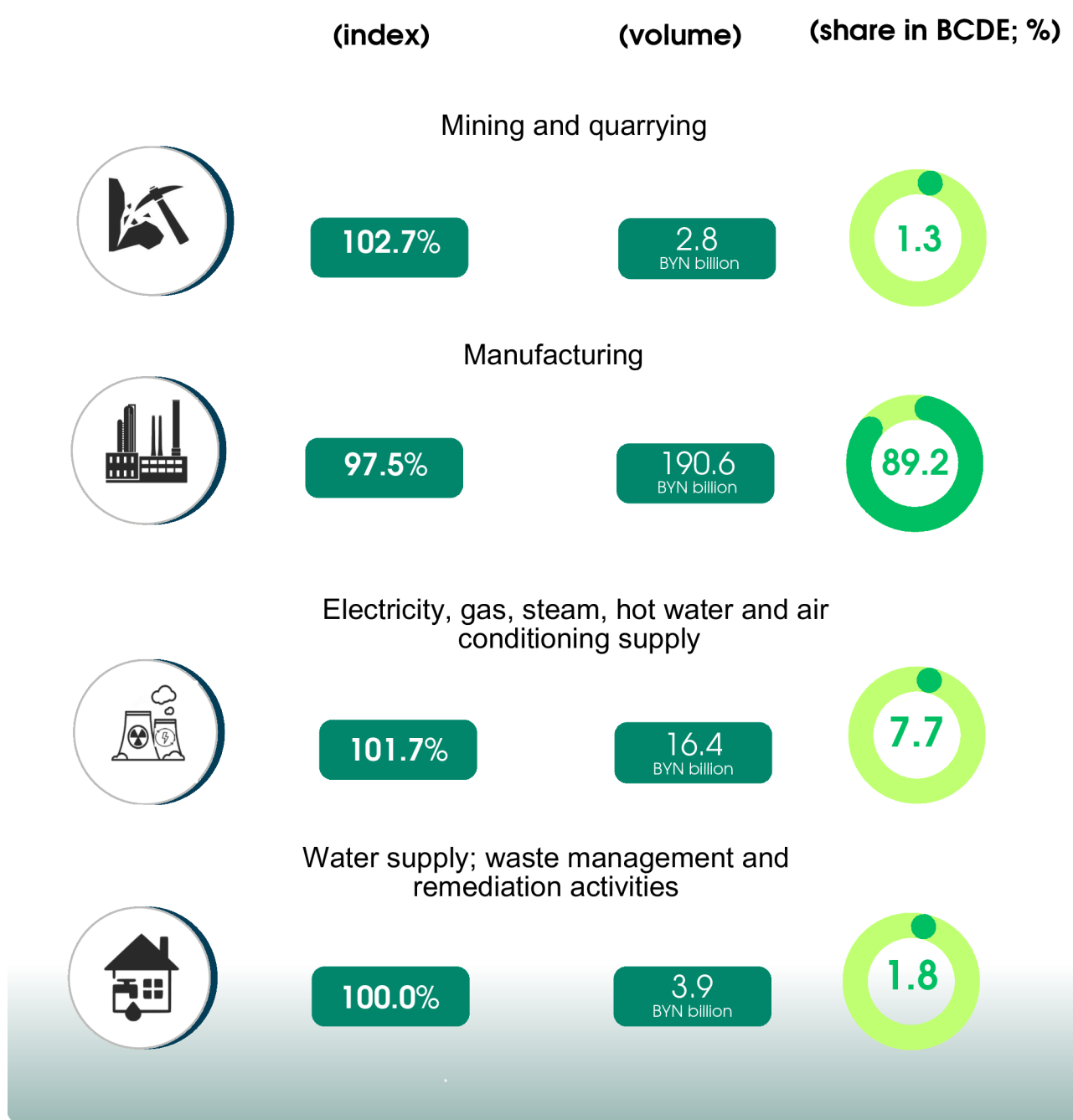
213.7

Share of the region of the Republic of Belarus
(percent of total)

BY REGIONS

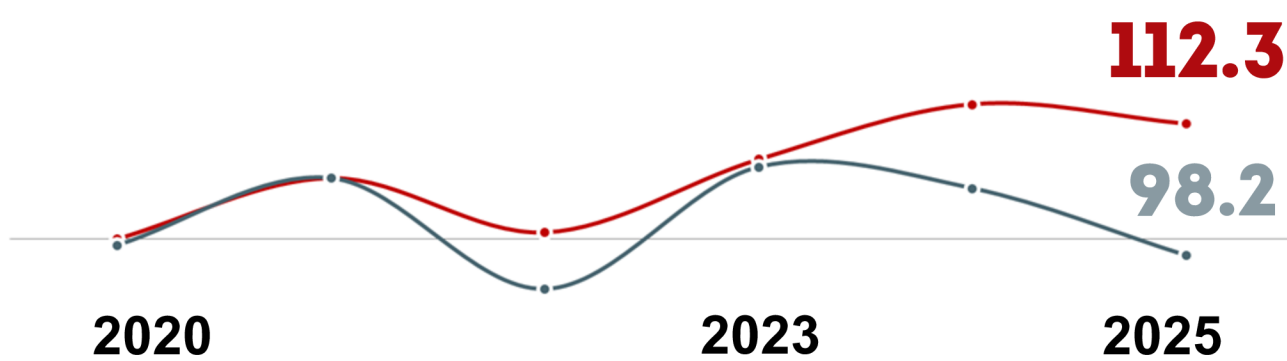


BY TYPES OF ACTIVITY

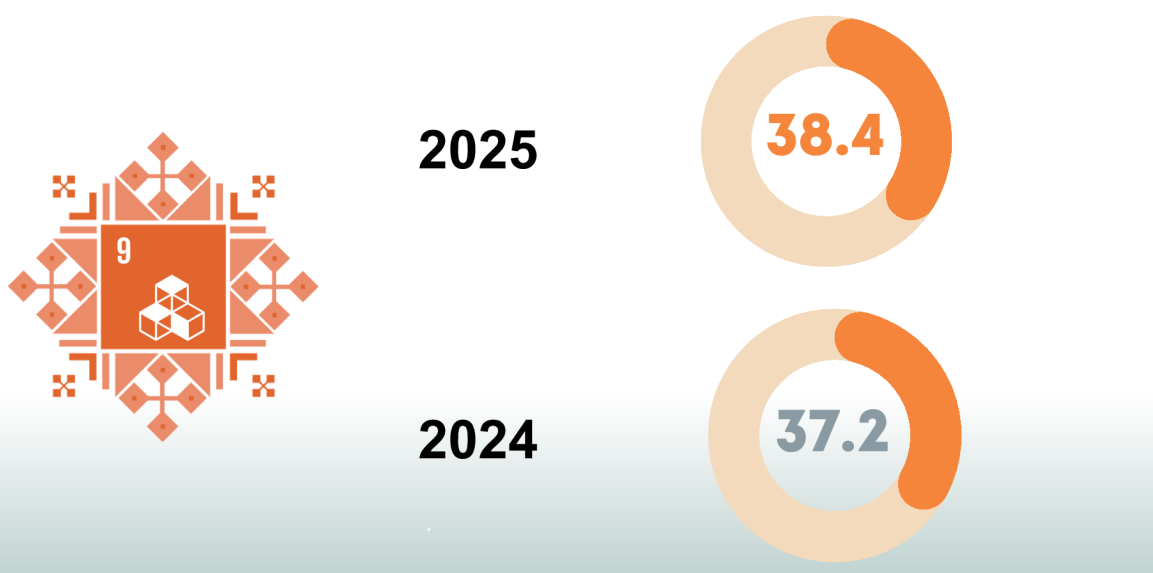


Index of Industrial Production (at constant prices, %)

---2020 = 100
 -●-to previous year = 100



Proportion of Medium and High-Tech Industry Value Added in Total Value Added (percent)



Actual information is posted



STATISTICAL
DATABASE



SUSTAINABLE DEVELOPMENT
GOALS IN BELARUS



REGIONAL INDICATORS OF THE
SUSTAINABLE DEVELOPMENT
GOALS IN BELARUS

Provided for information purposes.
 The use of the information is authorised, provided the National Statistical Committee of the Republic of Belarus is acknowledged as the source.

National Statistical Committee of the Republic of Belarus

220070, Minsk, Belarus, 12 Partizansky avenue

sbs@belstat.gov.by

+375 17 317 73 32