



Satellite account for education and vocational training

Education and training output by education and training purposes

2021

19%



Pre-primary education

16%



Primary education

28%



Secondary education

12%



Higher education

7%



Cultural, sports and recreation education

7%



Other education and vocational training

11%



In-house training

2023

19%

16%

30%

12%

5%

11%

7%

Financing of educational services, 2023



75,3%

From the budget

14,9%

From households funds

9,8%

From other sources

Distribution of household expenditures on education services, 2023



Pre-primary education

12,7%



Primary education

0,4%



Secondary education

8,6%



Higher education

35,5%



Cultural, sports and recreation education

9,3%



Other education

32,2%



Other expenses for education services

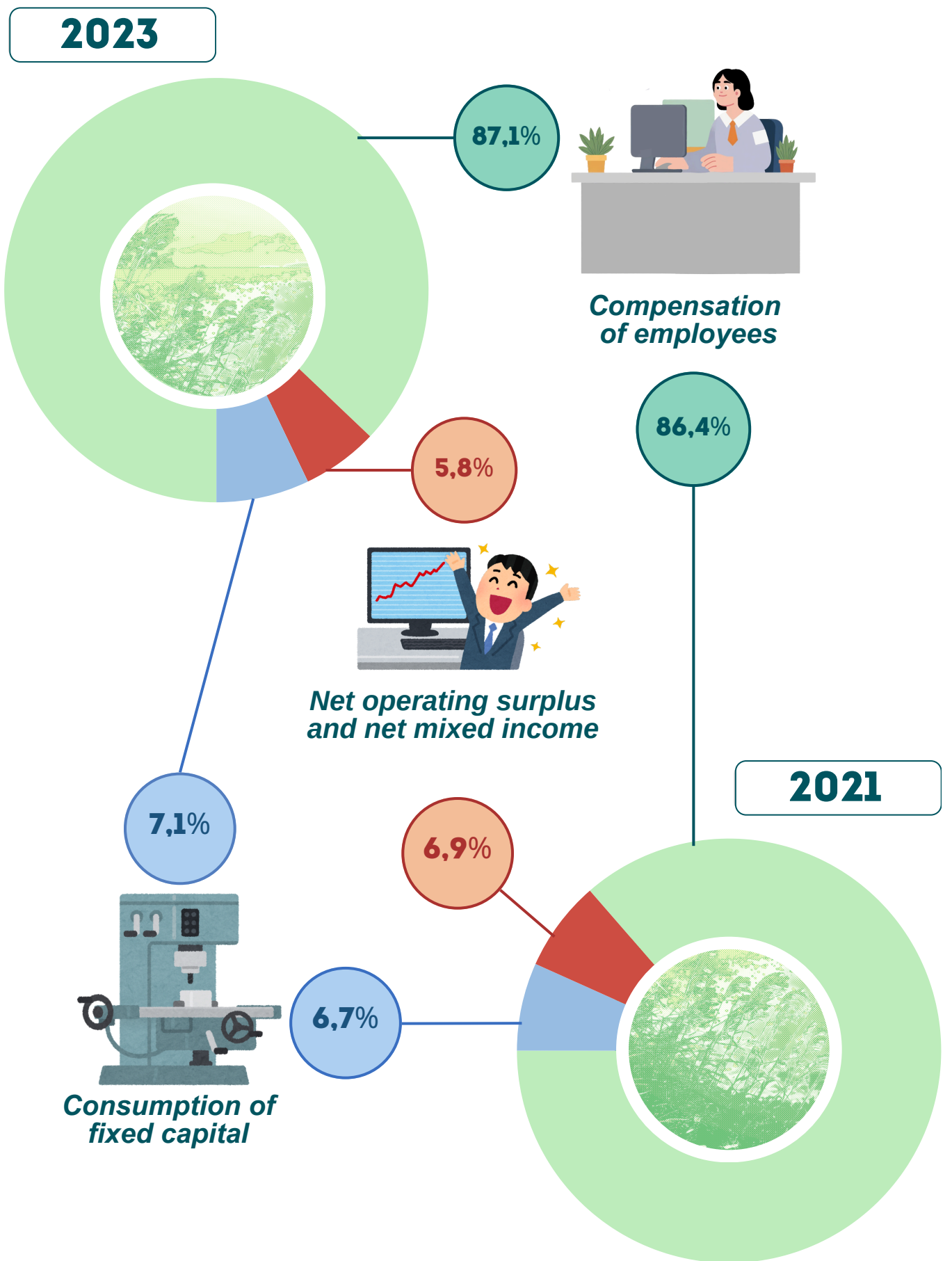
1,3%



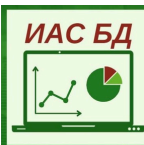
Education and training expenditure  
by sectors, 2023



Structure of gross value added by education



Current information is located:



БАЗА  
СТАТИСТИЧЕСКИХ  
ДАННЫХ



ЦЕЛИ  
УСТОЙЧИВОГО РАЗВИТИЯ В  
БЕЛАРУСИ



РЕГИОНАЛЬНЫЕ ПОКАЗАТЕЛИ  
ЦЕЛЕЙ  
УСТОЙЧИВОГО РАЗВИТИЯ В  
БЕЛАРУСИ

Presented for information purposes.  
When using the information the reference to the National Statistical Committee  
of the Republic of Belarus is mandatory.